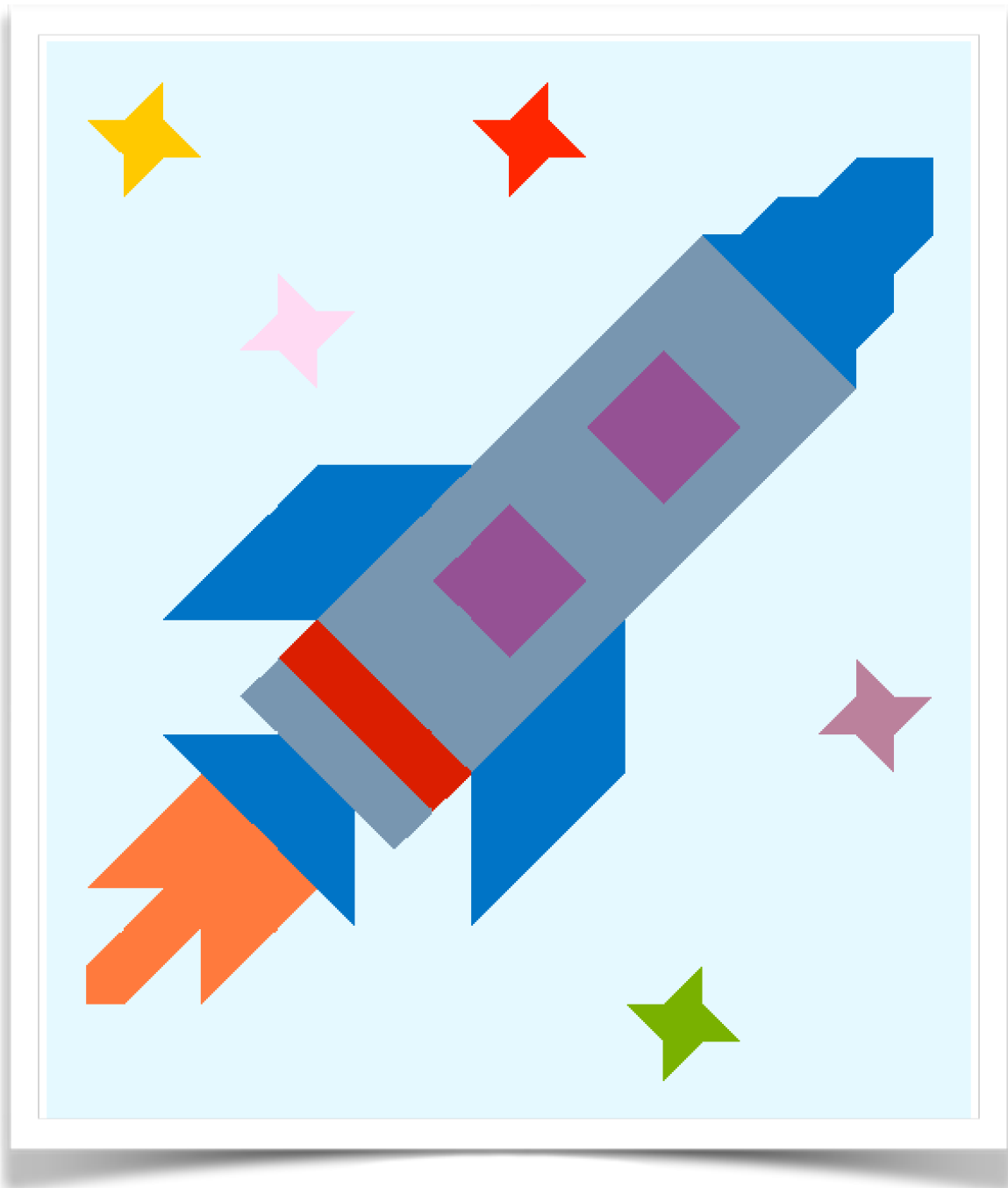


# To Infinity and Beyond!

Project Linus

North & Central Chicagoland Chapter  
2021 Mystery Quilt Along

From March through May of 2021 over 85 Project Linus blanketeers participated in a mystery quilt along. With minimal hints, they choose their fabric and then completed their quilt tops in strips released in a random order. This pattern is now available in non-mystery form and we hope you enjoy it as much as the original participants did.



This rocket ship quilt consists of (24) 2 1/2" wide vertical strips. Each strip is pieced from sewing half square triangles and rectangular pieces together, and will end up 56 1/2" long. The design itself is simple and will look fun in a large variety of fabrics and colors. Solids will work, blenders will work, batiks will work, small patterns will work.

#### Fabric Requirements:

Fabric A: 2 1/4 yards of a background fabric. It can be dark, light, solid or blender.

Fabrics B: The Rocket Body. You'll need about 1/2 yard.

Fabric C: The rocket wings, nose and tail. You'll need about 1/2 yard.

Fabric D: The flame. You'll need about 1/4 yard.

Fabrics E: The rocket windows. You'll need about 1/8 yard.

Fabric F: The stripe on the rocket. You'll need about 1/8 yard.

Fabrics G, H, I, J & K: The stars. You'll need scraps of each of these. If you'd like to make all the stars from the same fabric you'll need about 1/8 yard total.

Backing: You'll need about 3 yards.

Below are printable tags to cut out and attach to your fabrics to help with identification.

A	B	C
D	E	F
G	H	I
J	K	

## Half Square Triangles



You'll need to make (103) 2 1/2" half square triangles to complete this quilt top.

There are many different ways to create half square triangles. This video from Riley Blake Designs shows three different methods (this video is just to show creation techniques, please make sure to follow our pattern for correct sizes).

<https://www.youtube.com/watch?v=zjPQaQqrXnw>

If you find you need additional information, just search for 'make half square triangles' on youtube.

You should have all 11 of your fabrics labeled with letters. Below is the list of how many of each half square triangle unit combination you'll need to complete your quilt. For example, make (16) half square triangle units using fabric A & B etc...

AB	16
AC	14
AD	10
AF	2
AG	4

AH	4
AI	4
AJ	4
AK	4

BC	14
BE	16
BF	8
CD	3

**\*\*Helpful Hint:** Cut apart the chart above to create labels. You can clip them to your cut pieces to make it easier to identify them.

## Rectangular Piece Cutting

Below is the chart for making the 125 patchwork pieces you'll need for assembly. Each piece should be  $2\frac{1}{2}$ " wide and the chart lists all 11 fabric letters and the sizes and number of each size to cut. For example, from  $2\frac{1}{2}$ " strips of fabric A, you'll cut (5)  $2\frac{1}{2}$ " pieces, (7)  $4\frac{1}{2}$ " pieces, (9)  $6\frac{1}{2}$ " pieces etc... (cutting the larger pieces out of your strips first, is helpful).

fabric	size	#
A	$2\frac{1}{2}$ "	5
A	$4\frac{1}{2}$ "	7
A	$6\frac{1}{2}$ "	9
A	$8\frac{1}{2}$ "	5
A	$10\frac{1}{2}$ "	7
A	$12\frac{1}{2}$ "	3
A	$14\frac{1}{2}$ "	8
A	$16\frac{1}{2}$ "	3
A	$18\frac{1}{2}$ "	1
A	$20\frac{1}{2}$ "	4
A	$22\frac{1}{2}$ "	5
A	$24\frac{1}{2}$ "	1

fabric	size	#
A	$26\frac{1}{2}$ "	1
A	$32\frac{1}{2}$ "	2
A	$34\frac{1}{2}$ "	1
A	$36\frac{1}{2}$ "	1
A	$56\frac{1}{2}$ "	2
B	$2\frac{1}{2}$ "	11
B	$4\frac{1}{2}$ "	6
B	$6\frac{1}{2}$ "	2
B	$8\frac{1}{2}$ "	4
C	$2\frac{1}{2}$ "	4
C	$4\frac{1}{2}$ "	6
C	$6\frac{1}{2}$ "	7

fabric	size	#
C	$8\frac{1}{2}$ "	2
D	$2\frac{1}{2}$ "	3
D	$4\frac{1}{2}$ "	1
D	$6\frac{1}{2}$ "	1
D	$8\frac{1}{2}$ "	1
E	$4\frac{1}{2}$ "	4
F	$2\frac{1}{2}$ "	3
G	$2\frac{1}{2}$ "	1
H	$2\frac{1}{2}$ "	1
I	$2\frac{1}{2}$ "	1
J	$2\frac{1}{2}$ "	1
K	$2\frac{1}{2}$ "	1

**\*\*Helpful Hint:** Cut apart the chart above to create and label your pieces.

A	
B	
C	
D	
E	
F	

G	
H	
I	
J	
K	

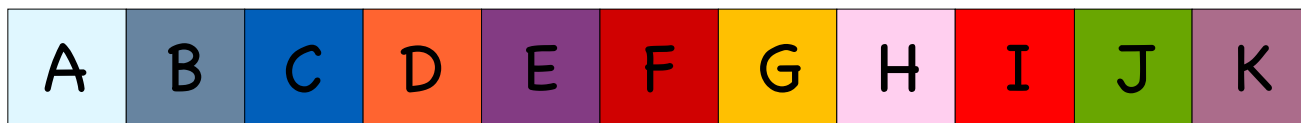
**\*\*Helpful Hint:** Cut a 1" square of each of your fabrics and attach them to this chart to help identify each color while assembling the quilt.

## Strip Assembly

Note: The one thing I'd like to stress now before you start building your strips is the importance of that scant 1/4" seam. Some of these strips have no seams in them, some have 8, some have 14! If you are not sewing your pieces together with a scant 1/4" seam, you will have problems in the end assembling the strips together.

The easiest way to find your scant 1/4" seam is to take three 2 1/2" strips and sew them together side by side. After pressing, your center strip should measure exactly 2". If it is too large, or too small, you need to adjust your sewing line.

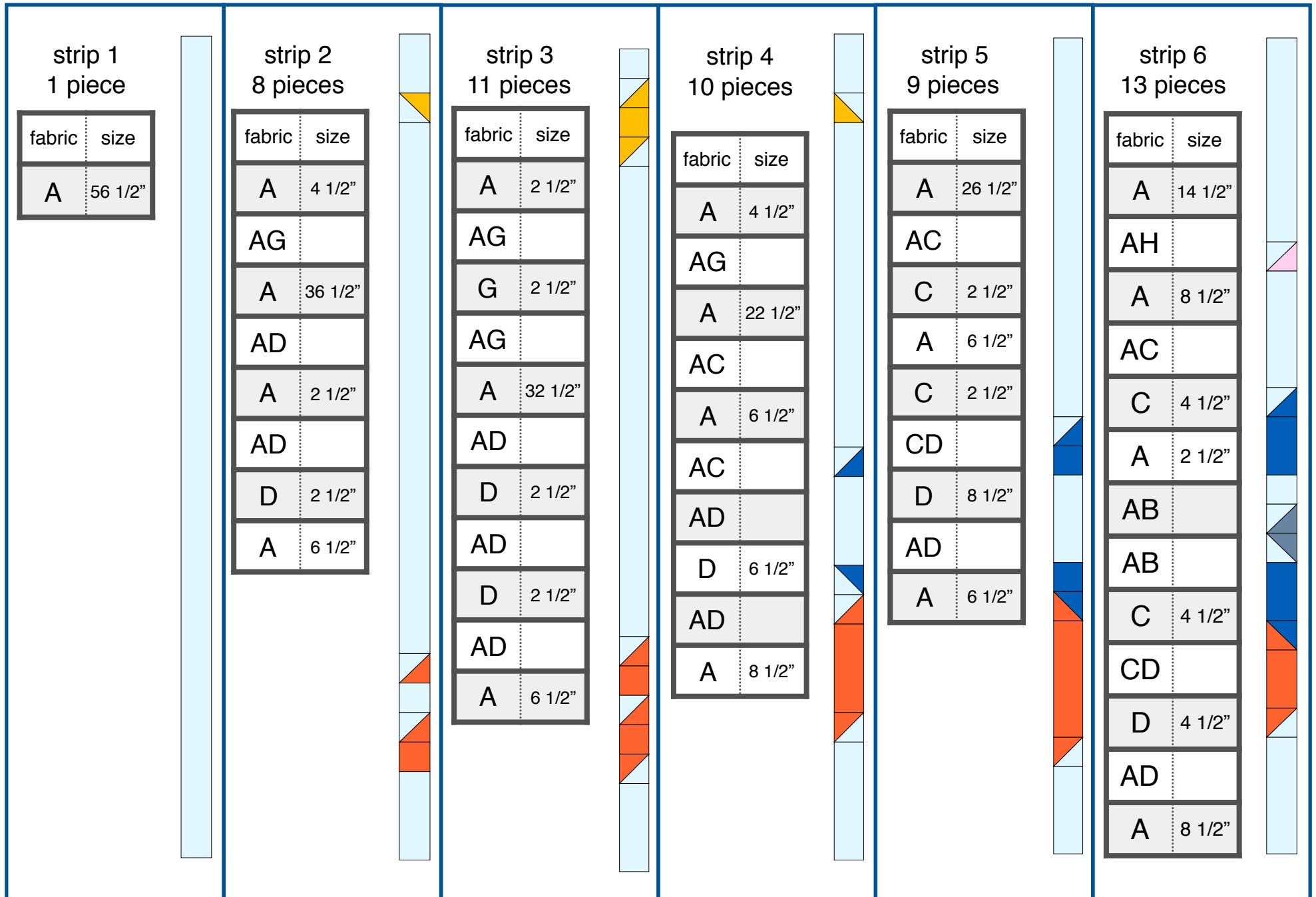
In the directions for strip assembly on the following pages, there are small pictures and a fabric piece assembly guide. This chart indicates the letter of each color in the strip pictures. These do not indicate the colors you need to use! They are just there to help you visualize the assembly.



Below are printable tags to cut out and attach to the top of your strips..



The two letter pieces on the assembly guides that do not have a size indicated next to them are your half square triangles. Pay close attention to the direction of these pieces when sewing these units to your strip. Each strip should measure 56 1/2" when completed. We suggest pressing the seams on your odd numbered strips in one direction, and your even numbered strips in the opposite direction.





strip 7  
15 pieces

fabric	size
A	12 1/2"
AH	
H	2 1/2"
AH	
A	4 1/2"
AC	
C	6 1/2"
AF	
BF	
B	2 1/2"
BC	
C	4 1/2"
CD	
AD	
A	10 1/2"

strip 8  
13 pieces

fabric	size
A	14 1/2"
AH	
A	6 1/2"
C	6 1/2"
BC	
BF	
F	2 1/2"
BF	
B	2 1/2"
BC	
C	4 1/2"
AC	
A	10 1/2"

strip 9  
10 pieces

fabric	size
A	22 1/2"
C	4 1/2"
BC	
B	4 1/2"
BF	
F	2 1/2"
BF	
B	2 1/2"
AB	
A	14 1/2"

strip 10  
9 pieces

fabric	size
A	22 1/2"
C	2 1/2"
BC	
B	8 1/2"
BF	
F	2 1/2"
BF	
AB	
A	14 1/2"

strip 11  
9 pieces

fabric	size
A	22 1/2"
BC	
B	2 1/2"
BE	
BE	
B	6 1/2"
BF	
AF	
A	16 1/2"

strip 12  
13 pieces

fabric	size
A	4 1/2"
AI	
A	14 1/2"
AB	
B	2 1/2"
BE	
E	4 1/2"
BE	
B	4 1/2"
BC	
C	6 1/2"
AC	
A	10 1/2"

strip 13  
15 pieces

fabric	size
A	2 1/2"
AI	
I	2 1/2"
AI	
A	10 1/2"
AB	
B	4 1/2"
BE	
E	4 1/2"
BE	
B	2 1/2"
BC	
C	6 1/2"
AC	
A	12 1/2"



strip 14  
12 pieces

fabric	size
A	4 1/2"
AI	
A	10 1/2"
AB	
B	8 1/2"
BE	
BE	
B	2 1/2"
BC	
C	6 1/2"
AC	
A	14 1/2"



strip 15  
10 pieces

fabric	size
A	14 1/2"
AB	
B	2 1/2"
BE	
BE	
B	8 1/2"
BC	
C	6 1/2"
AC	
A	16 1/2"



strip 16  
11 pieces

fabric	size
A	12 1/2"
AB	
B	2 1/2"
BE	
E	4 1/2"
BE	
B	4 1/2"
AB	
A	20 1/2"
AJ	
A	4 1/2"



strip 17  
13 pieces

fabric	size
A	10 1/2"
AB	
B	4 1/2"
BE	
E	4 1/2"
BE	
B	2 1/2"
AB	
A	20 1/2"
AJ	
J	2 1/2"
AJ	
A	2 1/2"



strip 18  
10 pieces

fabric	size
A	10 1/2"
BC	
B	6 1/2"
BE	
BE	
B	2 1/2"
AB	
A	24 1/2"
AJ	
A	4 1/2"



strip 19  
7 pieces

fabric	size
A	8 1/2"
AC	
C	2 1/2"
BC	
B	8 1/2"
AB	
A	32 1/2"



strip 20  
6 pieces

fabric	size
A	8 1/2"
C	6 1/2"
BC	
B	4 1/2"
AB	
A	34 1/2"



strip 21  
8 pieces

fabric	size
A	6 1/2"
AC	
C	8 1/2"
BC	
AB	
A	14 1/2"
AK	
A	20 1/2"



strip 22  
8 pieces

fabric	size
A	6 1/2"
C	8 1/2"
AC	
A	16 1/2"
AK	
K	2 1/2"
AK	
A	18 1/2"



strip 23  
6 pieces

fabric	size
A	6 1/2"
C	4 1/2"
AC	
A	22 1/2"
AK	
A	20 1/2"



strip 24  
1 piece

fabric	size
A	56 1/2"



## Sewing The Strips Together

Assembling strips can be tricky. They are long and thin and without careful assembly, they can go cattywampus.

Advice:

1) PIN! PIN! PIN!. Pin especially at the seams that need to match. This will help keep your two strips from going out of alignment.

2) Assemble in sections. Sew strip 1 to strip 2, sew strip 3 to strip 4 and so forth. You'll end up with 12 long pieces, each consisting of two of your strips. Then again, sew them together in twos and you will end up with 6 pieces each consisting of four of your strips.

3) Break out that walking foot! Most of us only use our walking foot for quilting but it works great for piecing as well, especially when piecing long strips. If changing to your walking foot, be sure to double check your scant 1/4" setting.

4) Don't always sew in the same direction. If you do the first assembly series (sewing 24 strips into 12) from top to bottom, sew your second assembly series (sewing 12 strips into 6) from bottom to top. Again, this helps keep the strips from curving.

5) REMOVE ALL PINS!

You can quilt this as desired but there is a small video available with quilting ideas. You can find it here:

<https://tinyurl.com/49s9bpd>