

## NO-SEW FLEECE BLANKET INSTRUCTIONS

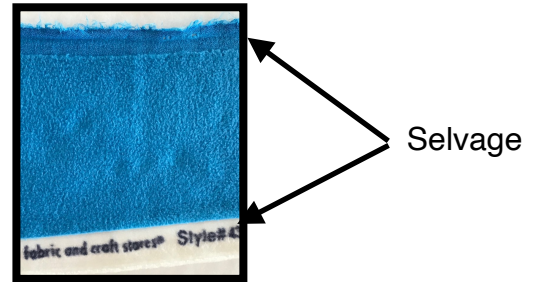
PROJECT LINUS FLEECE BLANKETS SHOULD BE CREATED WITH ONE LAYER, NOT TWO

**YOU WILL NEED:**  
1-1/2 to 2 yards fleece, pen or marker, very sharp fabric scissors, masking or measure tape

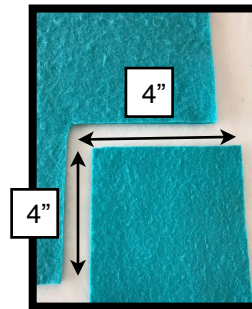
**PLEASE BUY FLEECE "OFF THE BOLT," NOT IN NO-SEW FLEECE BLANKET KITS!!**

**Step 1:** The selvage is found on both edges along the length of the fleece as it comes off the bolt. It sometimes has words printed on it, pin holes, rolls under a bit or can be a different texture and/or color. Using a sharp scissors and a long ruler, remove the selvage from both edges along the length of the fleece. **It is easier to remove the selvage before cutting the fringe.** The trimmed edge must be a straight, smooth line.

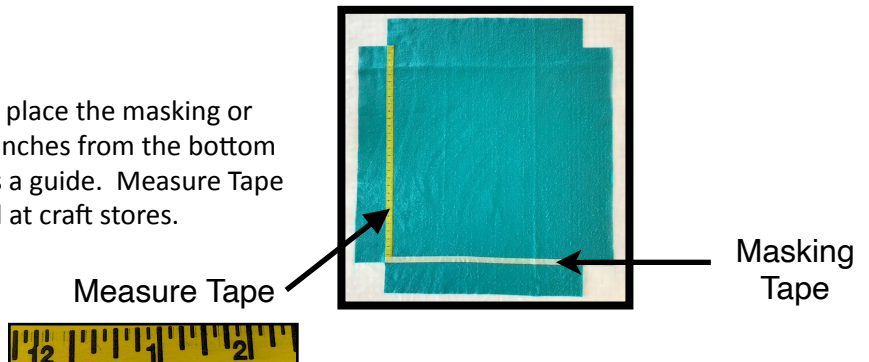
**THE SELVAGE MUST BE REMOVED BEFORE PROCEEDING TO STEP 2!!**



**Step 2:** Cut a four inch square out of each corner of the fleece.

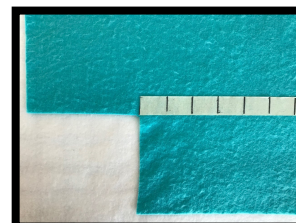


**Step 3:** With the fabric laying flat on a table, place the masking or measure tape from one side to the other four inches from the bottom edge of the fabric. Use the 4" cut-out corners as a guide. Measure Tape (with ruler markings) can be purchased at craft stores.

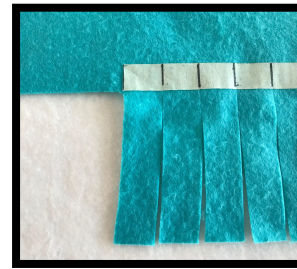


**Step 4:** If using masking tape, use a ruler to mark lines every inch along the tape with pen or marker.

**DO NOT MARK DIRECTLY ON THE FLEECE.**



**Step 5.** Starting on one side, cut a straight line up to the tape at each mark. The fringe will measure 1" x 4." After finishing the fringe on the first side, pick up the tape and place it on the next side. Cut fringe as before. Repeat moving the tape and cutting the fringe on the remaining sides of the fleece.



**Step 6** (A) Tie a knot in the MIDDLE of each fringe. (B) **DO NOT** tie the fringe too tightly or at the base of the fringe. (C) **DO NOT** tie two pieces of fringe together. (D) **DO NOT** cut a slit in top of fringe and pull fringe through slit. **THE BLANKET MUST LAY FLAT WHEN FINISHED!!**



(A)



(B)



(C)



(D)

### EXTRA NOTES:

**SMOKING:** Project Linus cannot accept any blankets that have been **made** or **stored** in a smoking environment.

**PETS:** If you have a pet, please check for pet hair. Wash & dry the blanket and place in a plastic bag before donating.

**FABRIC:** Use only fleece. Do not create a tied blanket using flannel, cotton, wool, felt or corduroy.

**FRAGRANCES:** **DO NOT** use fabric softener sheets, scented detergent or plastic bags with a fragrance.

**Before donating, spread the fleece blanket out on a table.  
If the blanket does not lay flat, the fringe has been knotted too tightly.  
Please loosen the knots before donating the blanket.**



**For more information, please visit our Chapter website:**

**[www.projectlinuschicago.com](http://www.projectlinuschicago.com)**

***Project Linus Coordinators***

Judi Goldman  
847-498-3987

[ChicagolandLinus@gmail.com](mailto:ChicagolandLinus@gmail.com)

Penny Gidd  
847-521-0672

[linuschicagoland@gmail.com](mailto:linuschicagoland@gmail.com)